

PI-LIT™

IMPACT DETECTION SYSTEM

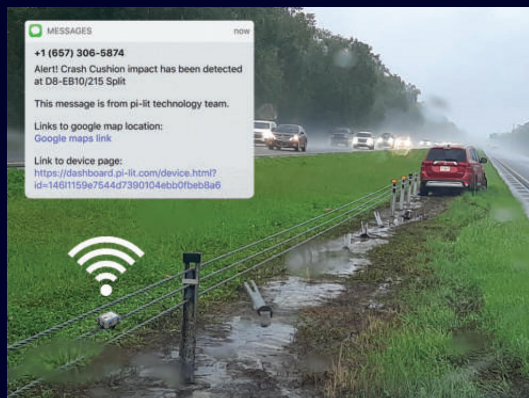


PI-LIT™

IMPACT DETECTION SYSTEM

The Pi-Lit Impact Detection System monitors, detects and then notifies highway agencies in real time when an impact has occurred on crash cushions, end terminals, guardrail and cable guardrail systems*. The small device installs easily and quickly without the need for screws or bolts. The cloud-based system sends notices via text or email and comes complete with a robust user interface.

*This product is not intended to replace or reduce the need for routine inspection protocols. Routine inspection protocols should still be followed.



FEATURES

Monitor for impacts on critical safety equipment

- Attenuators
- End terminals
- Guardrail
- Cable barrier

Real-time Impact Alerts to appropriate personnel

- SMS
- Email

Remote Sensitivity Tuning

- Individual control of X, Y, Z axis.

GPS tagging

- Non-invasive mounting
- No tools or brackets required.



SPECIFICATIONS

Cellular network & Radio Mesh Network

- LTE, CAT-M1 cellular coverage.
- ATT International coverage with ATT roaming partners.
- 2.4GHz radio mesh network communication.
- Range between device-device communication is approximately 100 meters (line of sight).

4-year battery life

- Default check-in frequency every 24-hours.
- Low battery alert at 25%.

3 axis (X,Y,Z) accelerometer sensor onboard

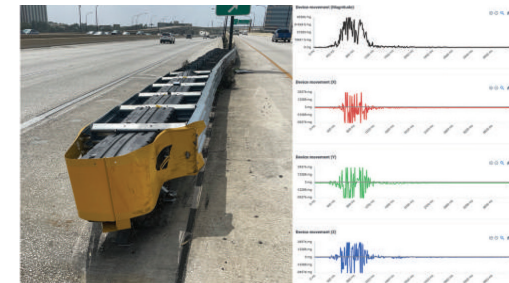
- Impact sensitivity tuned remotely.
- Individual axis tuning capable.
- Impact profiles for severity insight.

IP67 (Dust and water protection)

- Durable construction for superior performance.

Interior dashboard

- Customizable user permissions & team setup.
- API integration and support.
- Impact acceleration illustration.
- Inspection reports.
- Asset history and logging.
- Analytics.



DISTRIBUTED BY

WWW.VALTIR.COM
1.888.323.6374

