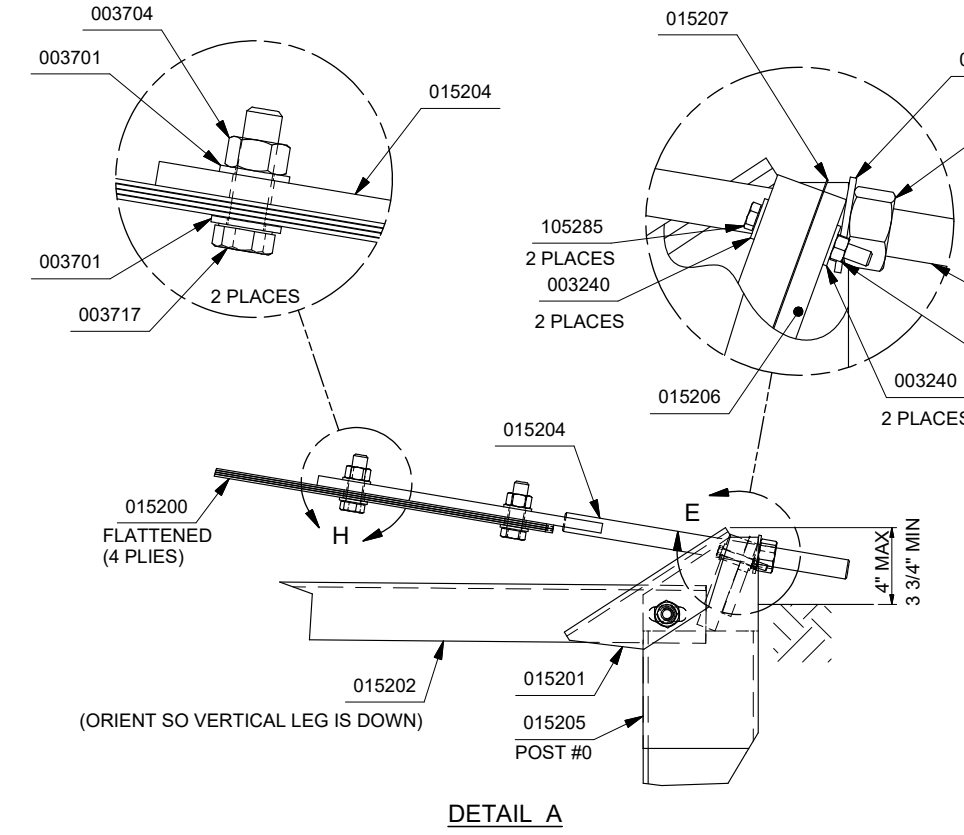
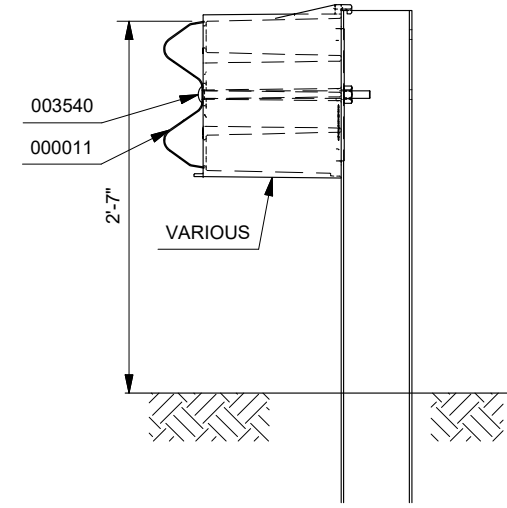
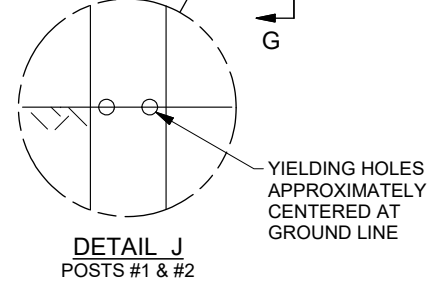
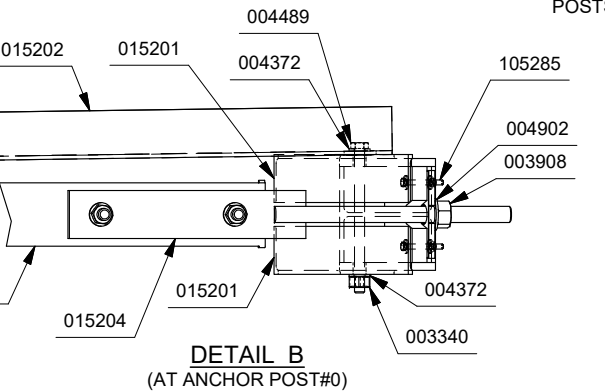
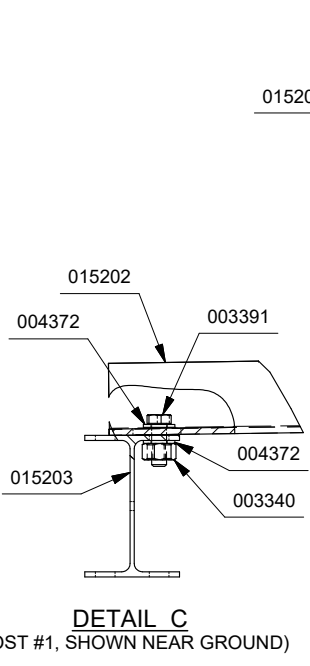
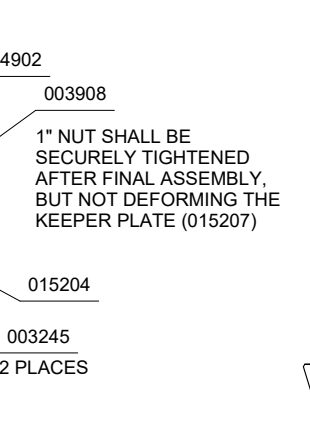


NOTE:
 INSTALL SoftStop® PARALLEL TO ROADWAY.
 WHEN OFFSET IS REQUIRED BY DESIGN ENGINEER,
 SEE SoftStop® (12" COMPOSITE BLOCKS) MANUAL
 FOR REQUIREMENTS.

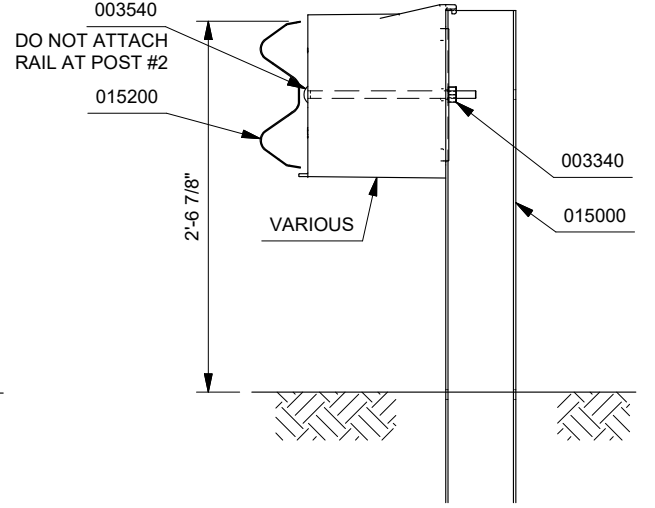
PARTS LIST		
PART NO.	QTY.	DESCRIPTION
000011	3	12/12/6/3/1.5/S
000533	6	6'-0" POST / W 6X8.5#
VARIOUS	7	12" COMPOSITE BLOCK
015000	1	6'0 POST/8.5/SYT-POST/7:25
015200	1	SFST-ANCHOR G.RAIL 12'-6" W/DECAL
015202	1	SFST-ANGLE STRUT
015203	1	SFST-POST#1 SYTP
015204	1	SFST-ANCHOR PADDLE
015205	1	SFST-POST#0
015208	1	SFST-IMPACT HEAD
HARDWARE KIT 626786:		
003240	6	WASHER,FLAT,5/16 W,TY A,G
003245	3	5/16" HEX NUT A563
003340	41	NUT,HX,5/8,G,RAIL
003360	32	5/8"X1.25" GR BOLT
003391	1	5/8"X1.75" HEX BOLT A325
003540	7	5/8"X14" GR BOLT A307
003701	4	3/4" ROUND WASHER F436
003704	2	3/4" HVY HEX NUT A563 DH
003717	2	3/4"X2.5" HEX BOLT A325
003908	1	1" HVY HEX NUT A563 DH
004372	4	WASHER,FLAT,5/8,HARD,TY 1,G
004489	1	5/8"X9" HEX BOLT A325
004902	1	1" ROUND WASHER F436
105285	2	5/16" X 2.5" HEX BOLT GRD 5
105286	1	5/16" X 1.5" HEX BOLT GRD 5
015201	2	SFST-ANCHOR ANGLE
015206	1	SFST-PLATE WASHER
015207	1	SFST-KEEPER PLATE
005852	1	REFL SHT 5X24 Y/B RT



- NOTES:
- REFER TO SoftStop® (12" COMPOSITE BLOCKS) ASSEMBLY MANUAL.
 - PROPER SITE GRADING SHOULD BE ACCOMPLISHED IN ACCORDANCE WITH LOCAL SPECIFYING AGENCY GUIDELINES AND THE AASHTO ROADSIDE DESIGN GUIDE.
 - DO NOT ATTACH THE SoftStop® DIRECTLY TO A RIGID BARRIER.
 - UNDER NO CIRCUMSTANCES SHALL THE GUARDRAIL WITHIN THE SoftStop® BE CURVED.
 - MANUFACTURER SUGGESTS CUSTOMER TO PROVIDE REFLECTORIZATION OF THE TERMINAL.
 - IT IS ACCEPTABLE TO INSTALL THE SoftStop® IMPACT HEAD PARALLEL TO THE GRADE LINE OR WITH AN UPWARD TILT. SEE SoftStop® ASSEMBLY MANUAL FOR SPECIFIC DETAILS.



SECTION F-F
(POST #3 - #8)



SECTION G-G
(POST #2)

DRAWN: D. SALSER	DATE: 7/26/2019	MODEL: TL-3 / 12" BLOCK / 12'6"
CHECKED: P. KRUSE	DATE: 8/6/2019	TRAFFIC DIRECTION: UNIDIRECTIONAL
UNLESS OTHERWISE NOTED, DIMENSIONS ARE IN MILLIMETERS (INCH). DIMENSIONS ACCORDING TO ASME Y14.5-2018 AND QMS-SE-003 UNLESS OTHERWISE SPECIFIED.		
REVISION DESCRIPTION	ECO	DATE
BLK WAS 006740; BLK DESC WAS "COMPOSITE BLOCK 12X6X14"; FIXED SYMBOL LOCATION	7606	2/24/21
UPDATE BORDER	8262	10/12/22
UPDATED 015200 TO HAVE DECAL	8740	3/2/23
BY: RJV	CHK: BRE	
BY: JM	CHK: KWL	
BY: JMB	CHK: AJC	

SoftStop® TERMINAL (12" BLOCKS)
 PLAN, ELEVATION & SECTION
 MASH TEST LEVEL 3 (TL-3)
 P/N: 500772



SS 772

1 of 1