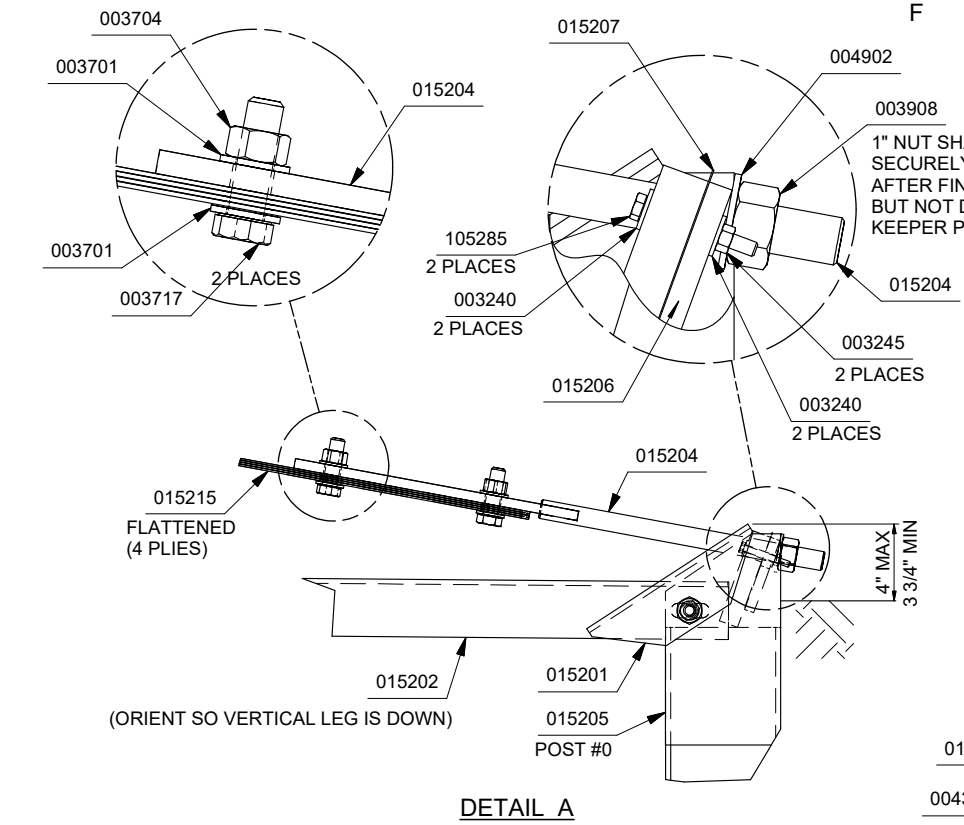
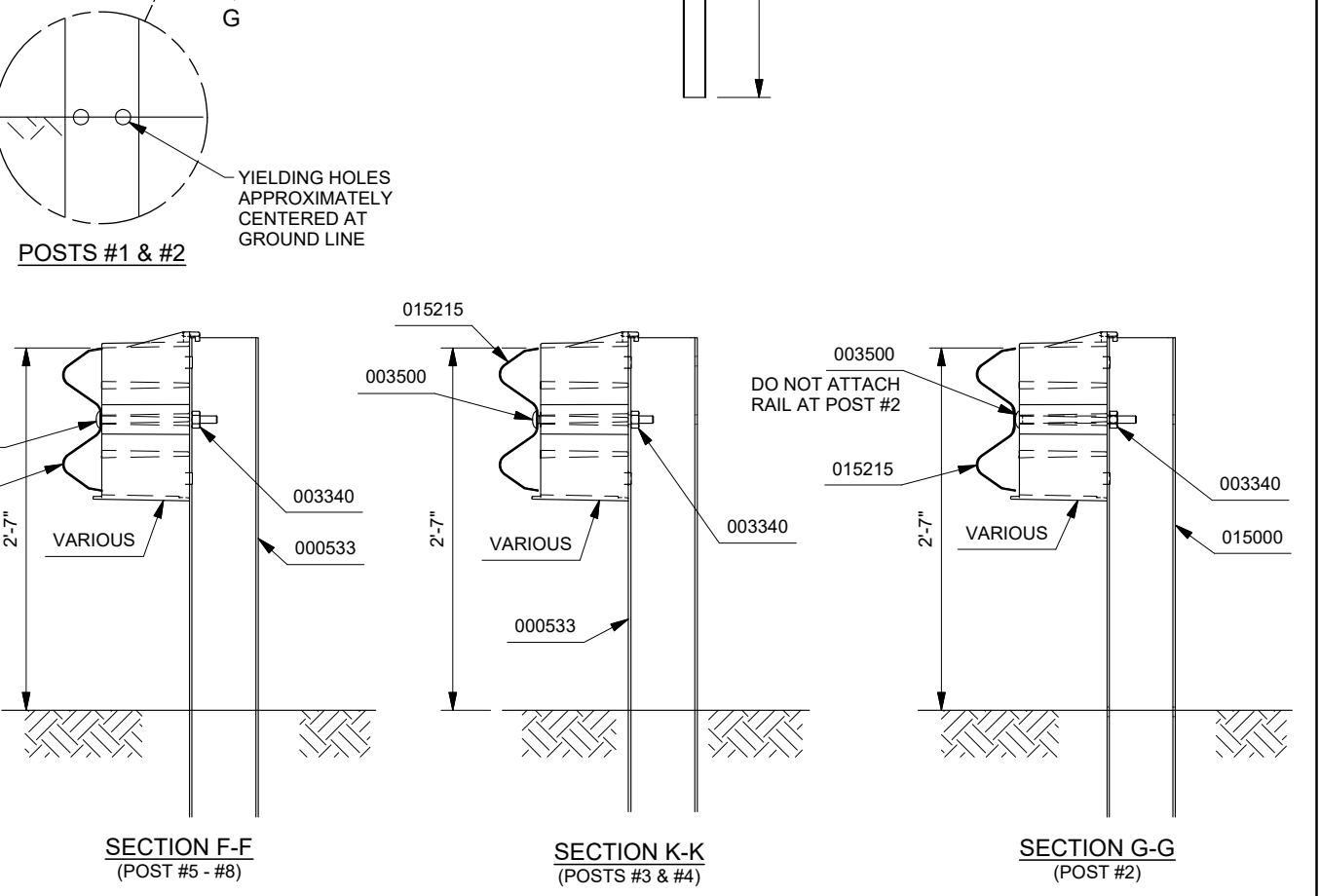
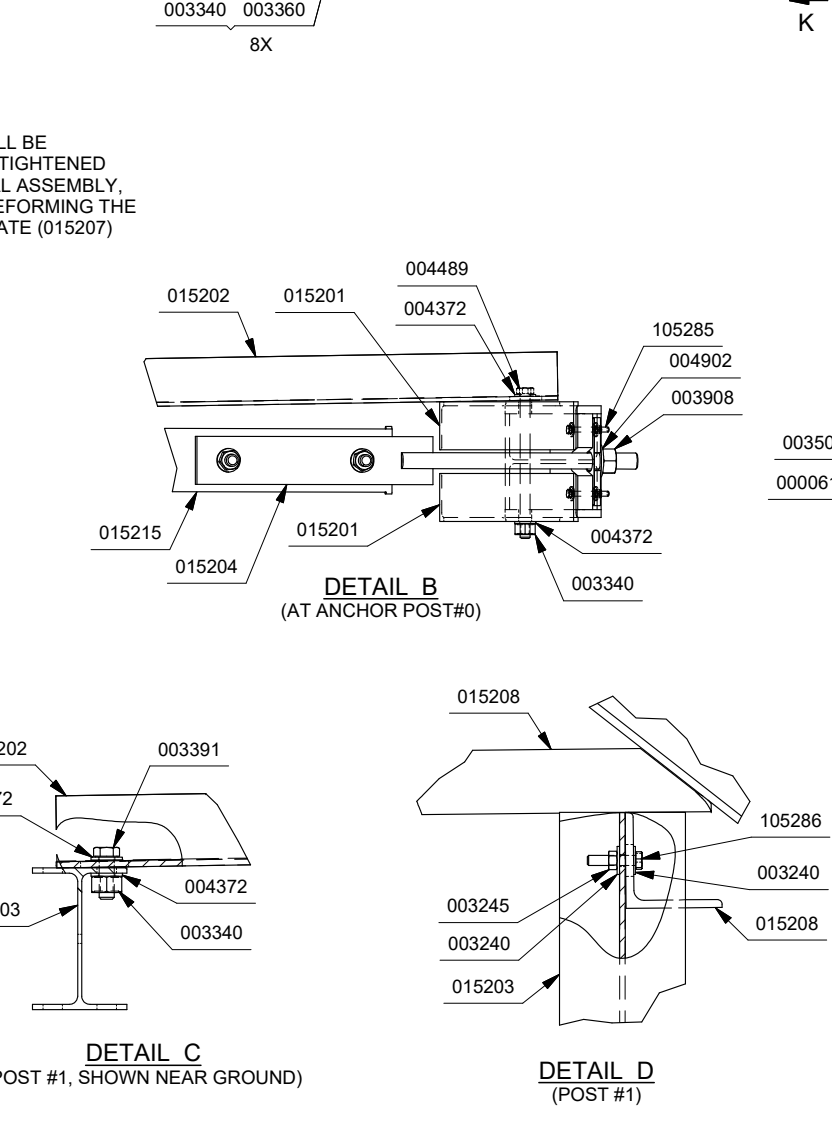


NOTE:
 INSTALL SoftStop® PARALLEL TO ROADWAY.
 WHEN OFFSET IS REQUIRED BY DESIGN ENGINEER,
 SEE SoftStop® (8" COMPOSITE BLOCKS) MANUAL FOR
 REQUIREMENTS.

PARTS LIST		
PART NO.	QTY.	DESCRIPTION
000061	1	12/25'0/3'1.5/S
000533	6	6'-0" POST / W 6X8.5#
VARIOUS	7	8" COMPOSITE BLOCK
015000	1	6'0 POST/8.5/SYT-POST/7:25
015202	1	SFST-ANGLE STRUT
015203	1	SFST-POST#1 SYTP
015204	1	SFST-ANCHOR PADDLE
015205	1	SFST-POST#0
015208	1	SFST-IMPACT HEAD
015215	1	SFST-ANCHOR G.RAIL 25'-0" W/DECAL
HARDWARE KIT 034429		
003240	6	WASHER,FLAT,5/16 W,TY A,G
003245	3	5/16" HEX NUT A563
003340	25	NUT,HX,5/8,G,RAIL
003360	16	5/8"X1.25" GR BOLT
003391	1	5/8"X1.75" HEX BOLT A325
003500	7	BOLT,RAIL,5/8-11X10
003701	4	3/4" ROUND WASHER F436
003704	2	3/4" HVY HEX NUT A563 DH
003717	2	3/4"X2.5" HEX BOLT A325
003908	1	1" HVY HEX NUT A563 DH
004372	4	WASHER,FLAT,5/8,HARD,TY 1,G
004489	1	5/8"X9" HEX BOLT A325
004902	1	1" ROUND WASHER F436
105285	2	5/16" X 2.5" HEX BOLT GRD 5
105286	1	5/16" X 1.5" HEX BOLT GRD 5
015201	2	SFST-ANCHOR ANGLE
015206	1	SFST-PLATE WASHER
015207	1	SFST-KEEPER PLATE



- NOTES:
- REFER TO SoftStop® (8" COMPOSITE BLOCKS) ASSEMBLY MANUAL.
 - PROPER SITE GRADING SHOULD BE ACCOMPLISHED IN ACCORDANCE WITH LOCAL SPECIFYING AGENCY GUIDELINES AND THE AASHTO ROADSIDE DESIGN GUIDE.
 - DO NOT ATTACH THE SoftStop® DIRECTLY TO A RIGID BARRIER.
 - UNDER NO CIRCUMSTANCES SHALL THE GUARDRAIL WITHIN THE SoftStop® BE CURVED.
 - MANUFACTURER SUGGESTS CUSTOMER TO PROVIDE REFLECTORIZATION OF THE TERMINAL.
 - IT IS ACCEPTABLE TO INSTALL THE SoftStop® IMPACT HEAD PARALLEL TO THE GRADE LINE OR WITH AN UPWARD TILT. SEE SoftStop® ASSEMBLY MANUAL FOR SPECIFIC DETAILS.



DRAWN: D. HAYES CHECKED: K. LOONEY <small>UNLESS OTHERWISE NOTED, DIMENSIONS ARE IN MILLIMETERS (INCH). DIMENSIONS ACCORDING TO ASME Y14.5-2018 AND QMS-SE-003 UNLESS OTHERWISE SPECIFIED.</small>	DATE: 2/3/2016 DATE: 2/10/2016	MODEL: TL-3 / 8" BLOCK / 25' TRAFFIC DIRECTION: UNIDIRECTIONAL	SoftStop® TERMINAL (8" BLOCKS) PLAN, ELEVATION & SECTION MASH TEST LEVEL 3 (TL-3) P/N: 500673B		
REVISION DESCRIPTION ADDED 8" COMPOSITE BLOCKS TO NOTES & MOVED 015201, 015206 & 015207 TO HDWR KIT UPDATE BORDER UPDATED 015215 TO HAVE DECAL	ECO 6641 8261 8740	DATE 8/1/19 10/18/22 3/2/23			REV A B C
SS 673			1 of 1	<small>© Valtir, LLC. All rights reserved.</small>	