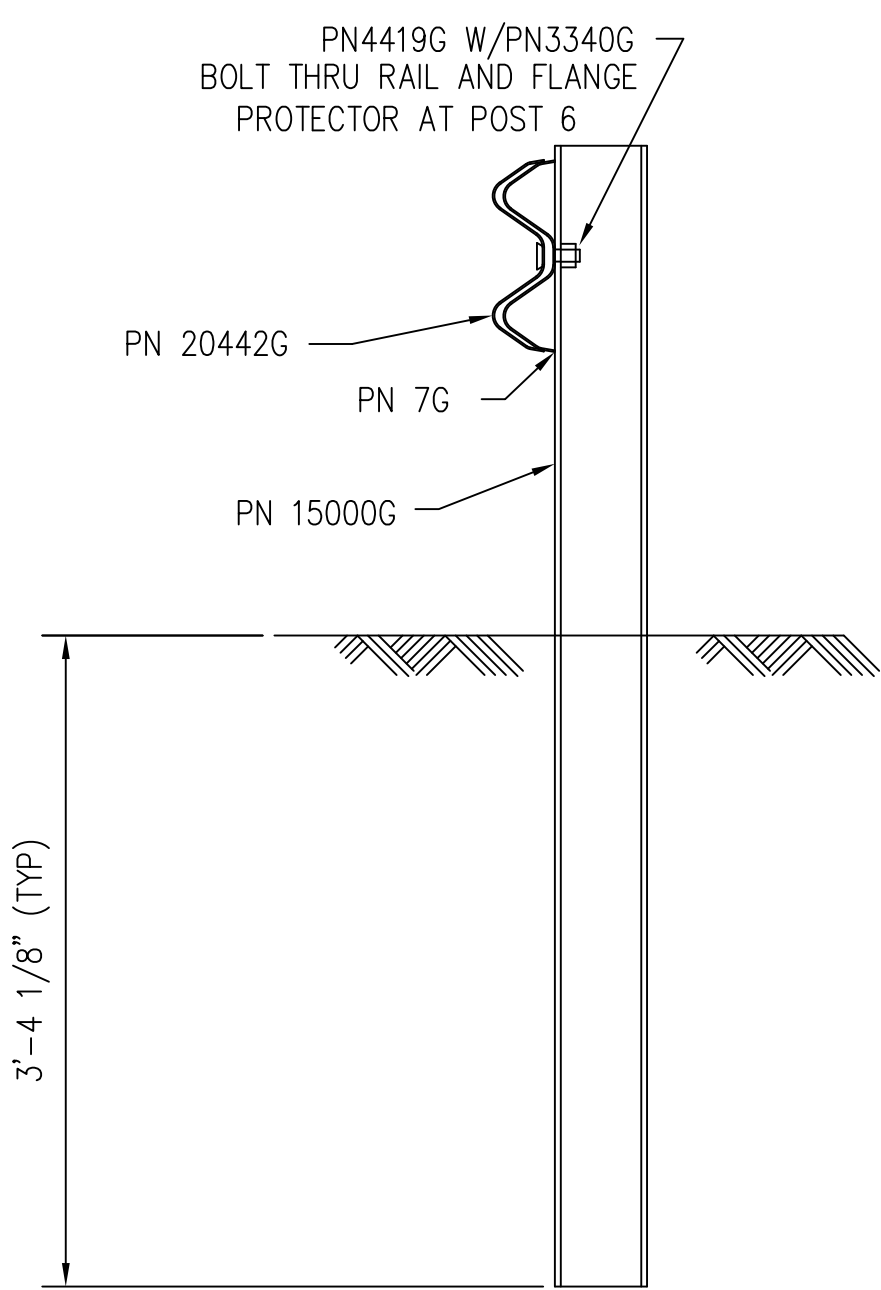
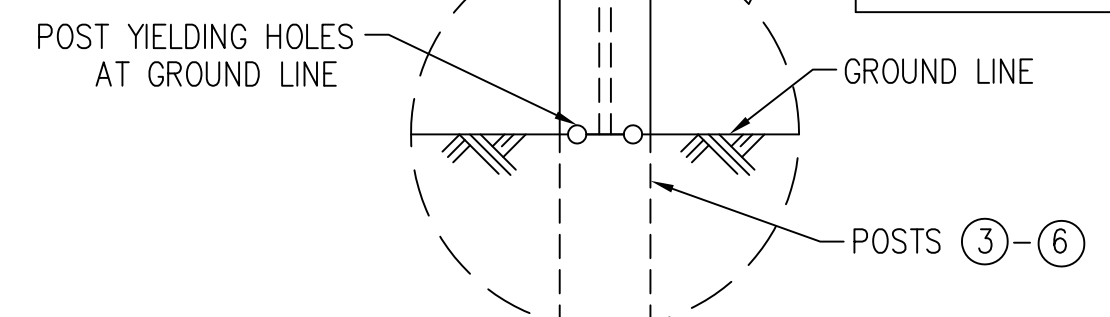
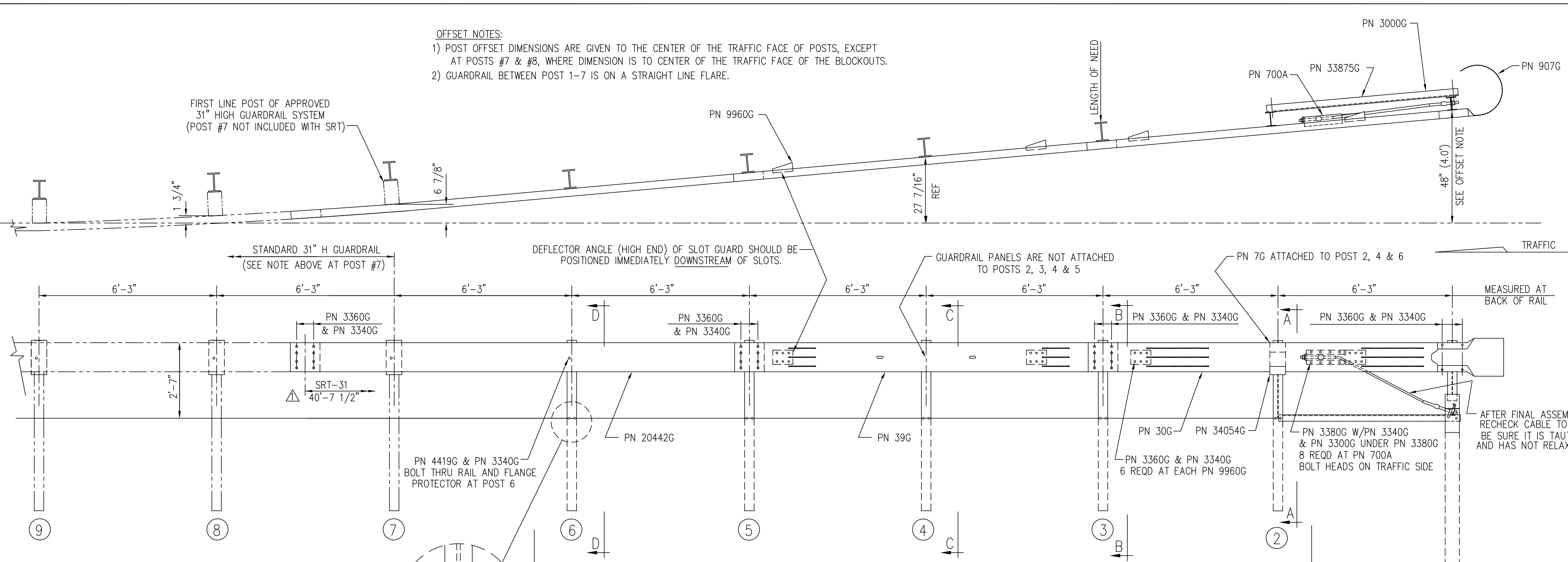
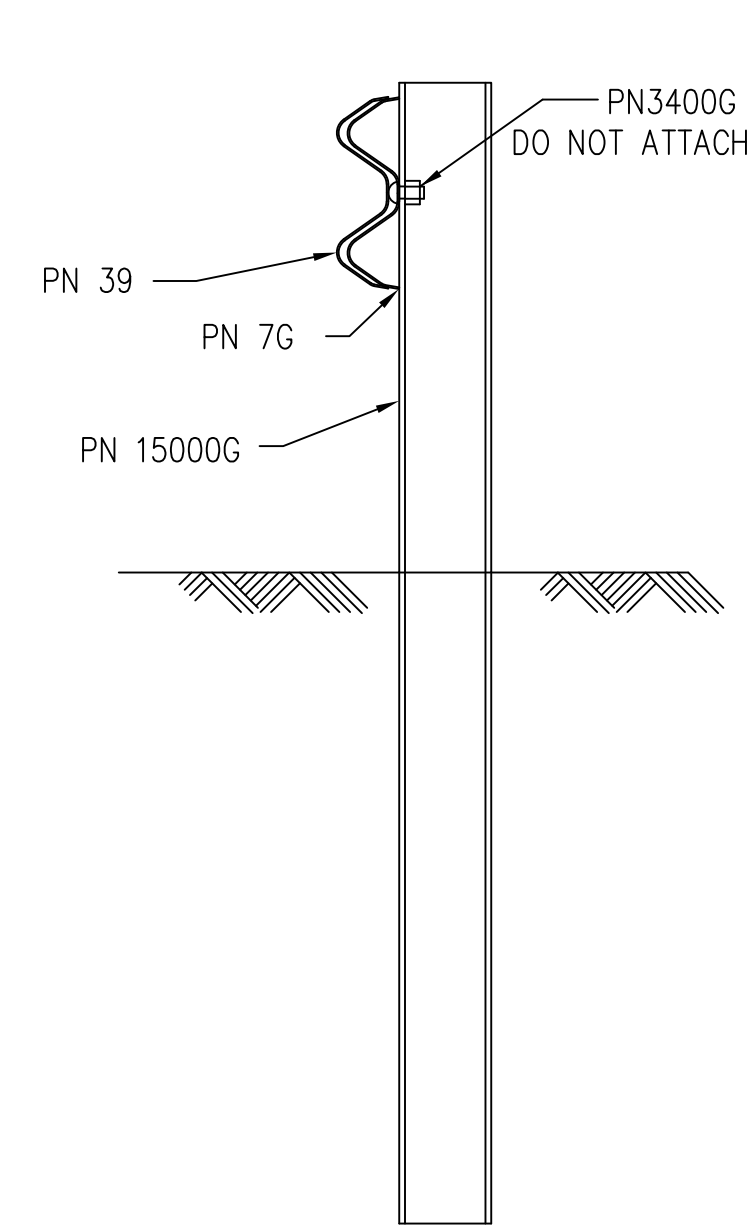


OFFSET NOTES:
 1) POST OFFSET DIMENSIONS ARE GIVEN TO THE CENTER OF THE TRAFFIC FACE OF POSTS, EXCEPT AT POSTS #7 & #8, WHERE DIMENSION IS TO CENTER OF THE TRAFFIC FACE OF THE BLOCKOUTS.
 2) GUARDRAIL BETWEEN POST 1-7 IS ON A STRAIGHT LINE FLARE.

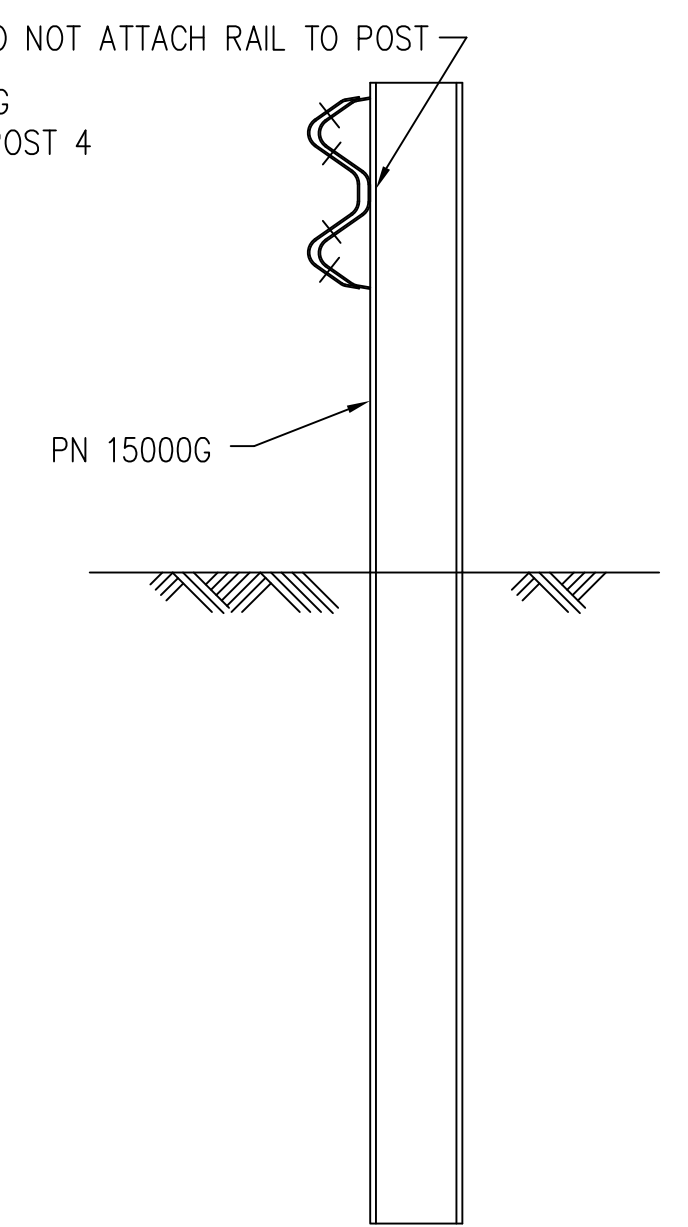
FIRST LINE POST OF APPROVED 31" HIGH GUARDRAIL SYSTEM (POST #7 NOT INCLUDED WITH SRT)



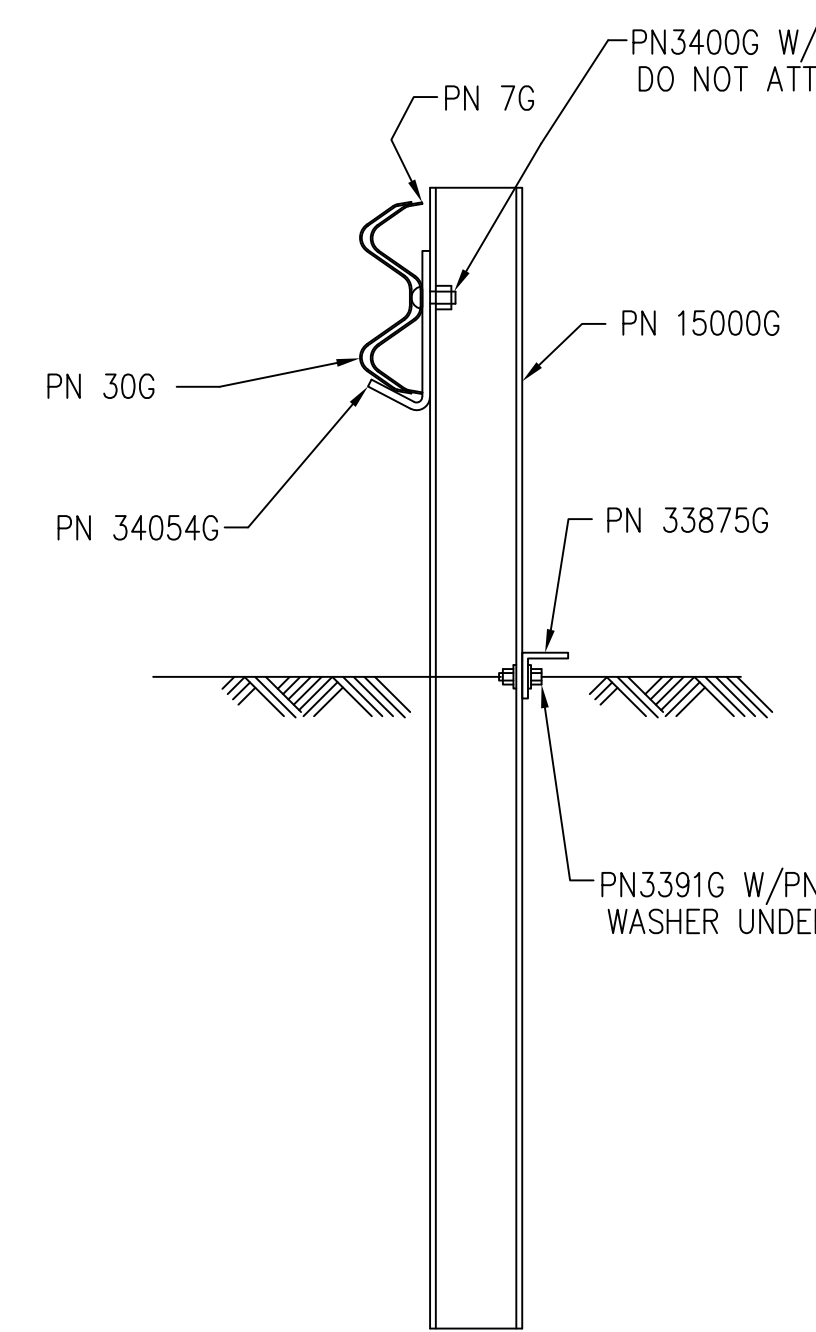
SECTION "D-D"
 (@ POST #6)



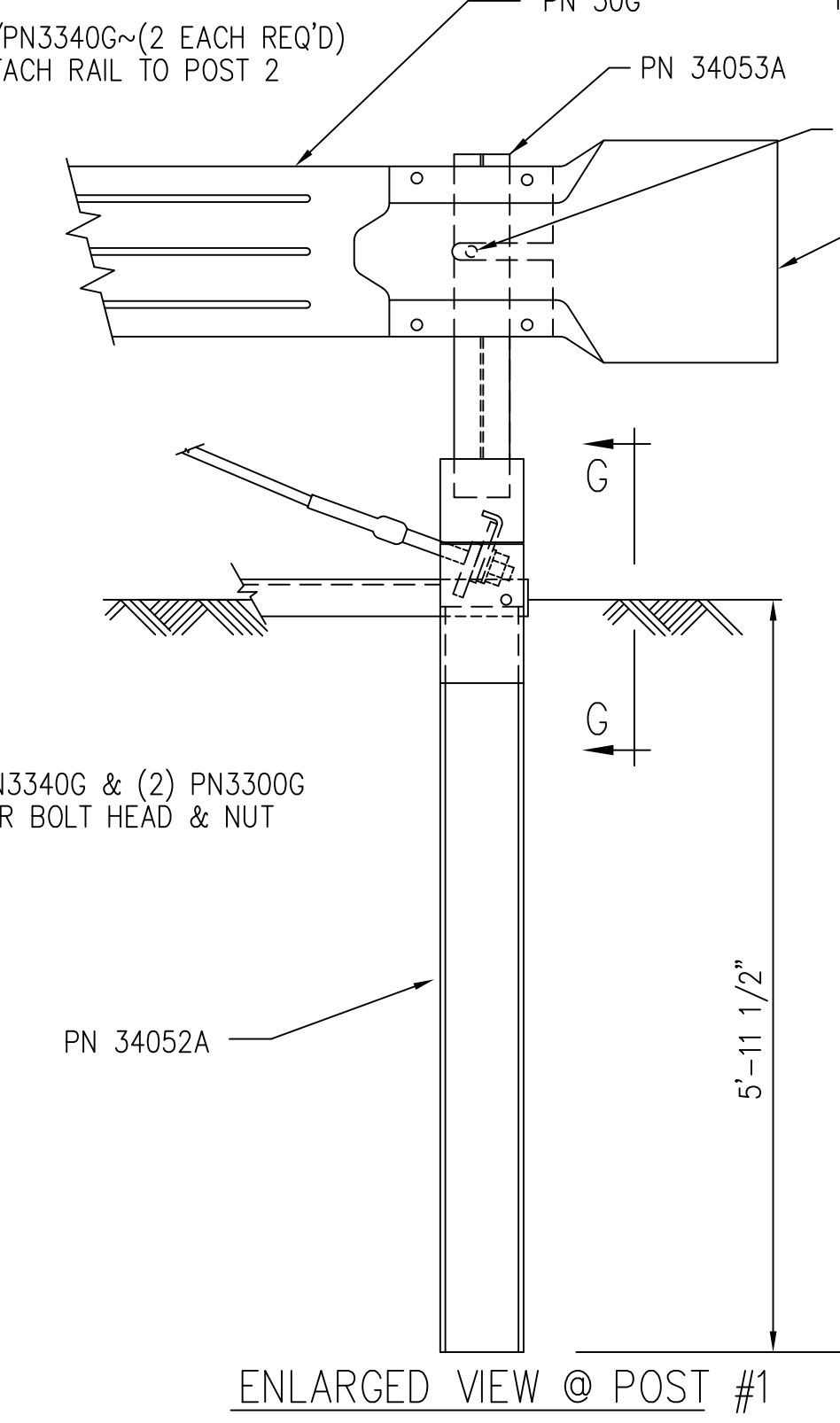
SECTION "C-C"
 (@ POST #4)



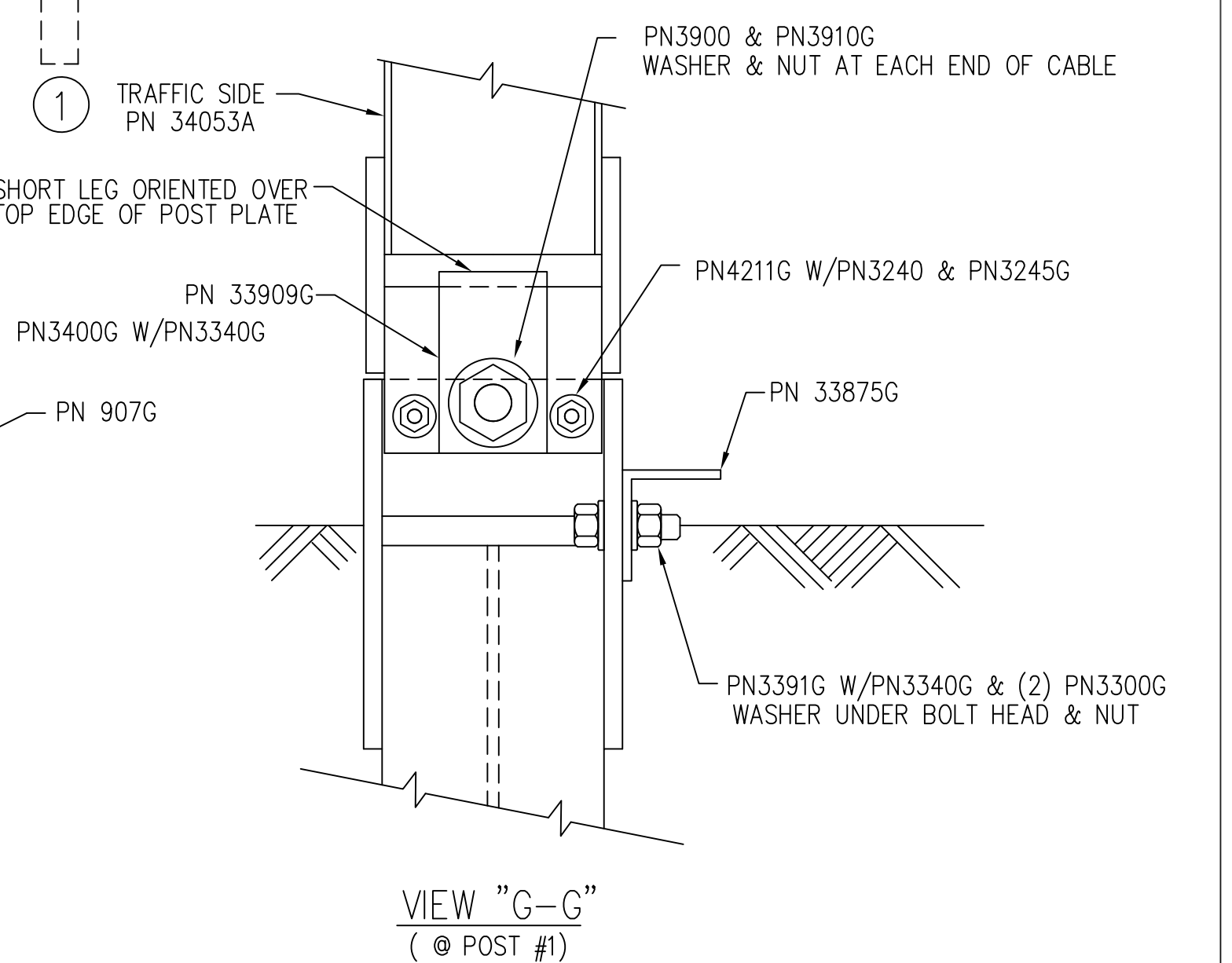
SECTION "B-B"
 (@ POST #3 & #5)



SECTION "A-A"
 (@ POST #2)



ENLARGED VIEW @ POST #1



VIEW "G-G"
 (@ POST #1)

BILL OF MATERIAL		
PN	QTY	DESCRIPTION
7G	3	12/6"/FLG PROTECTOR (AT POST 2, 4 & 6)
30G	1	12/12/6/S SRT-1 (GUARDRAIL)
39G	1	12/12/6/S SRT-2 (GUARDRAIL)
700A	1	CABLE ANCHOR BRACKET
907G	1	12/BUFFER/ROLLED (TERMINAL)
3000G	1	3/4 x 6'-6" CABLE
HARDWARE		
3240G	2	5/16" WASHER (AT POST 1)
3245G	2	5/16" HEX NUT (AT POST 1)
3300G	12	5/8" WASHER
3340G	67	5/8" HEX HGR NUT
3360G	52	5/8" x 1 1/4" HGR SPLICE BOLT
3380G	8	5/8" x 1 1/2" HEX HD BOLT
3400G	4	5/8" x 2" HGR POST BOLT (AT POSTS 1, 2 & 4)
3391G	2	5/8" x 1 3/4" HEX BOLT (A325) (AT STRUT)
3900G	2	1" WASHER (AT CABLE)
3910G	2	1" HEX NUT (AT CABLE)
4211G	2	5/16" x 1 3/4" HEX BOLT (AT POST 1)
4419G	1	5/8" x 1 3/4" COUNTERSUNK HD BOLT (AT POST 6)
9960G	4	SLOT GUARD BRACKET
15000G	5	6'-0" SYT POST (W6 X 8.5)
20442G	1	12/15'7.5/3'1.5/2@6'3/S SRT-3(GUARDRAIL)
33909G	1	CABLE ANCHOR BRACKET (AT POST 1)
33875G	1	ANGLE STRUT 3 x 3 x 1/4
34052A	1	CR POST 1 BOT (W6 x 15)
34053A	1	CR POST 1 TOP (W6 x 8.5)
34054G	1	POST SHELF ANGLE (AT POST 2)

REV.	CHK'D	BY	DATE	REMARKS
B	AJC	JM	2/8/23	ECO 8683 - UPDATE BORDER
1	BT	SSny	8/5/13	DIM MOVED TO CORRECT POSITION

SRT-31

SRT-31 (31" H, 40'-7 1/2")
 SLOTTED RAIL TERMINAL ERECTION DETAILS
 (3 PANELS, 1 CR AND 5 SYT POSTS)

DRAWN	BT
CHECKED	SG
SCALE	NTS
DATE	1-11-13
ENG. FILE #	SS616-01E
SHT.No.	E1 OF 1
DRAWING NO.	SS 616


Valtir, LLC.
 15601 Dallas Parkway, Suite 525
 Addison, Texas 75001

This drawing and the information shown thereon is the sole property of Valtir, LLC. Neither the drawing nor such information is to be used for any purpose other than that for which it was specifically furnished by Valtir, LLC., nor is any reproduction authorized without written permission.