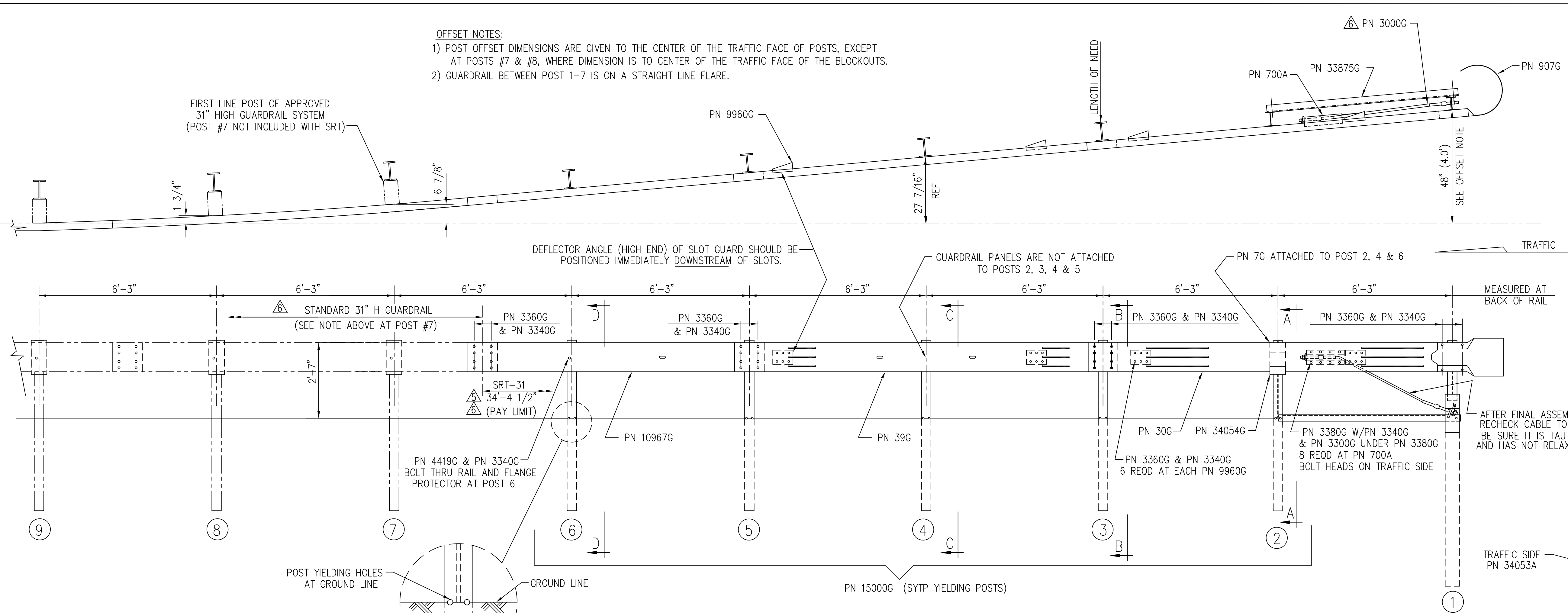


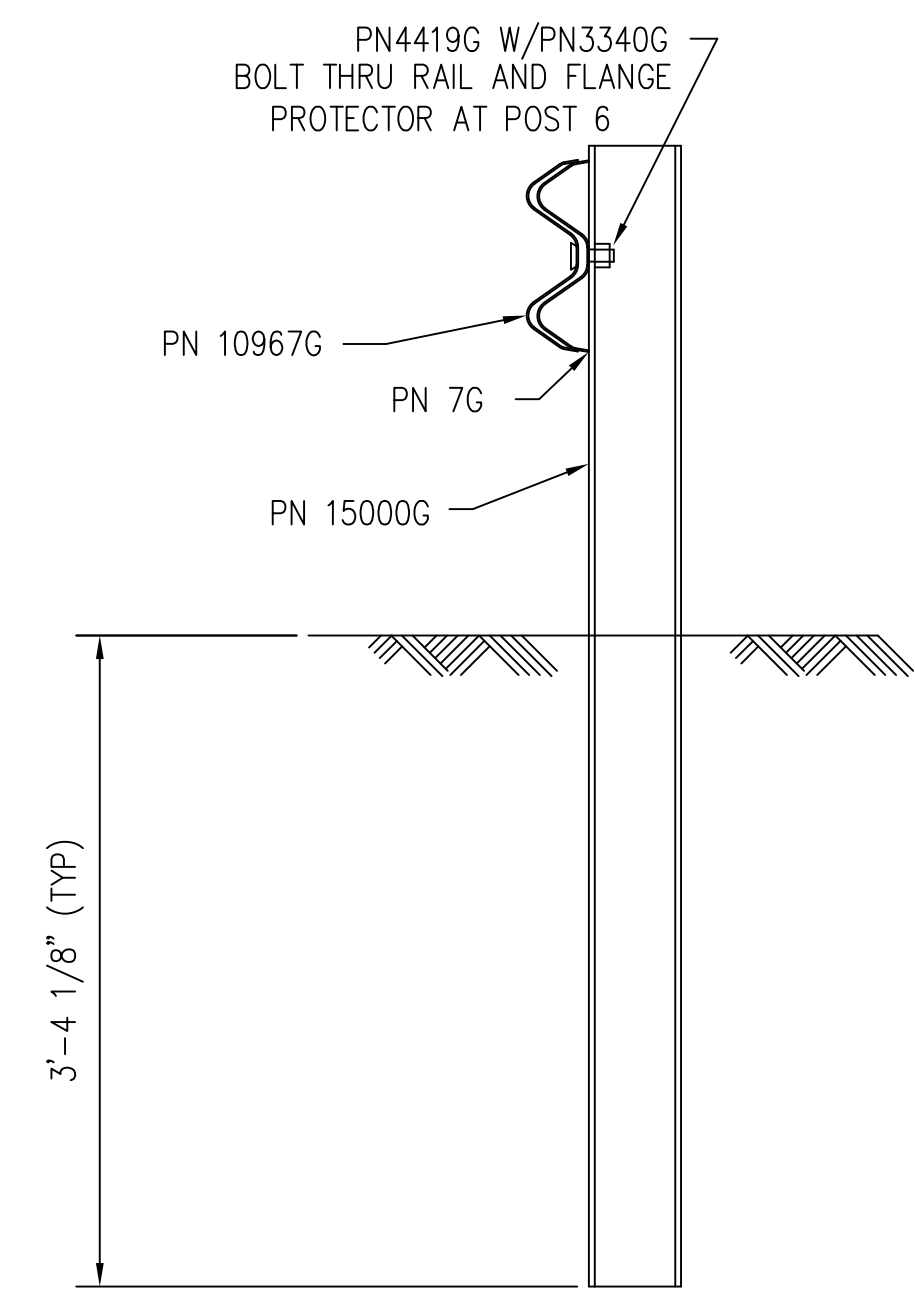
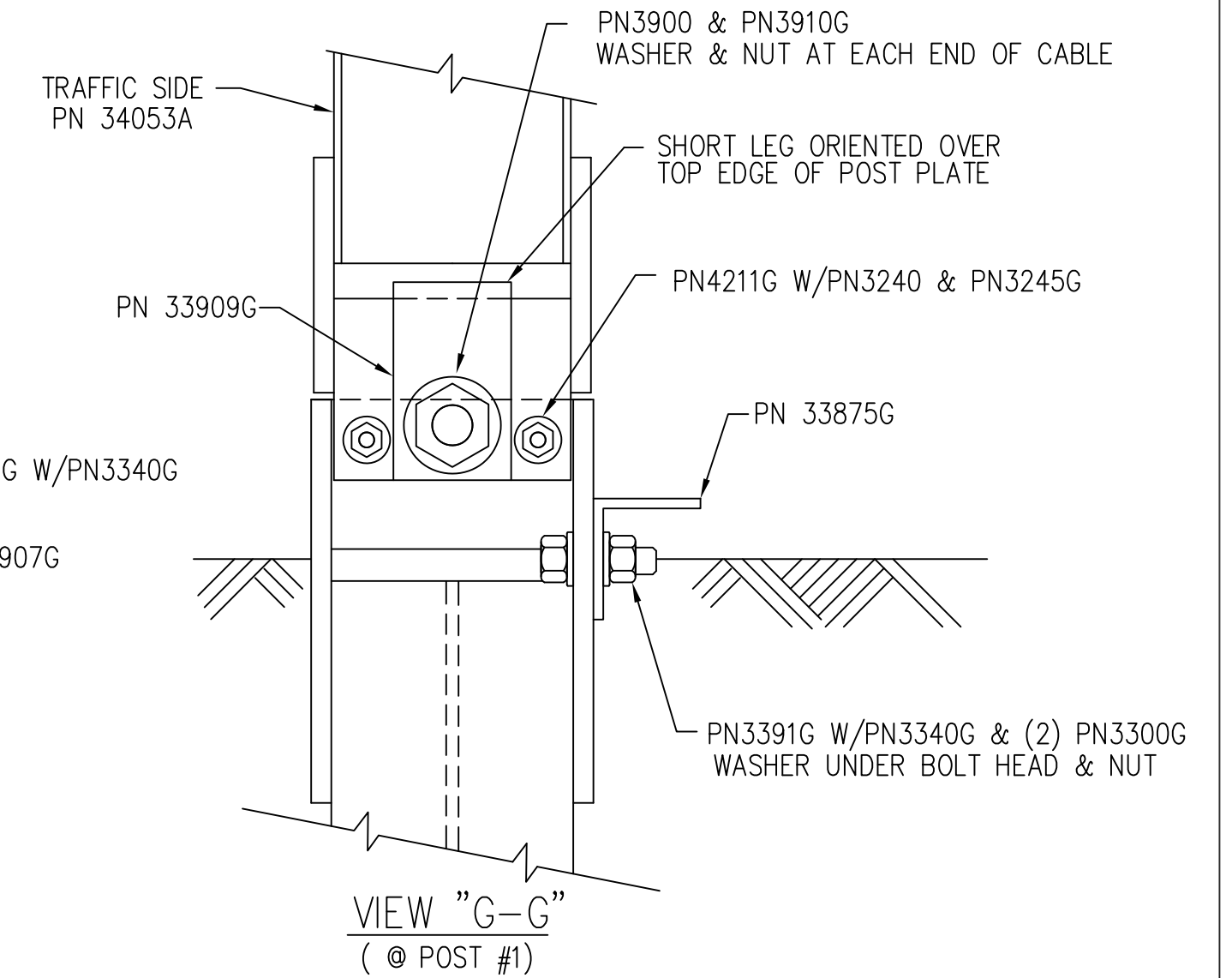
OFFSET NOTES:
 1) POST OFFSET DIMENSIONS ARE GIVEN TO THE CENTER OF THE TRAFFIC FACE OF POSTS, EXCEPT AT POSTS #7 & #8, WHERE DIMENSION IS TO CENTER OF THE TRAFFIC FACE OF THE BLOCKOUTS.
 2) GUARDRAIL BETWEEN POST 1-7 IS ON A STRAIGHT LINE FLARE.

FIRST LINE POST OF APPROVED 31" HIGH GUARDRAIL SYSTEM (POST #7 NOT INCLUDED WITH SRT)

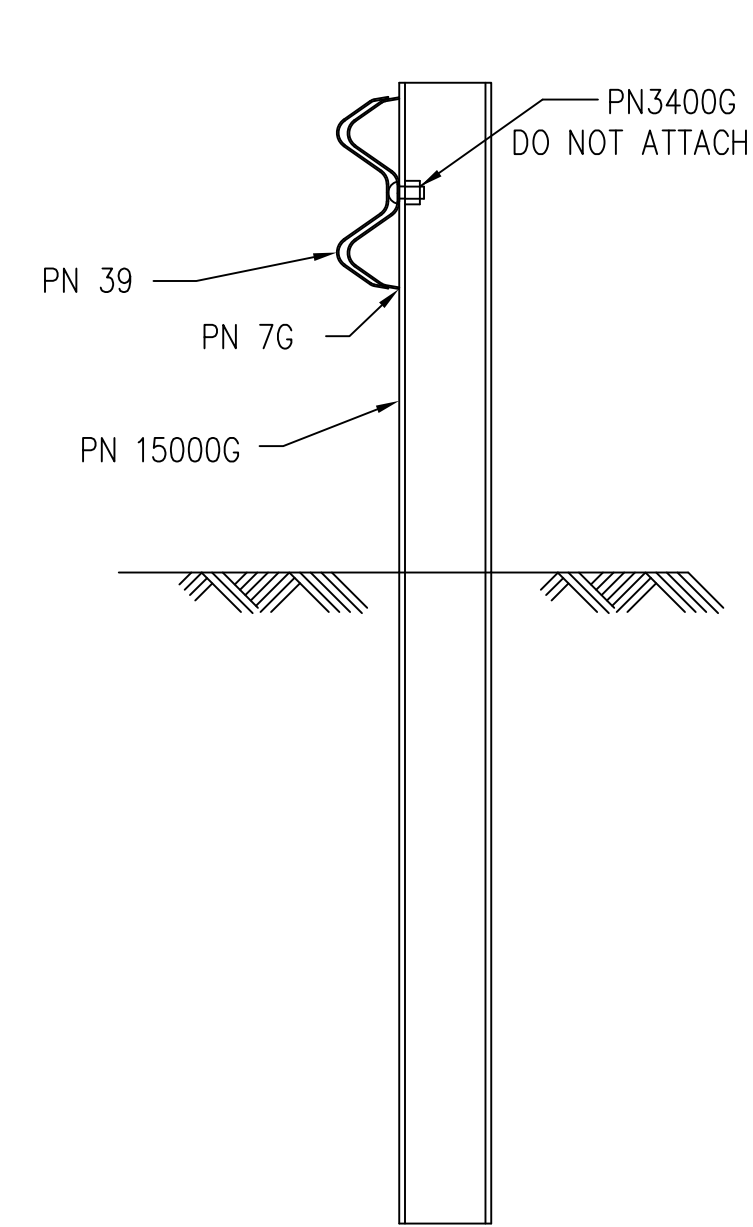


BILL OF MATERIAL		
PN	QTY	DESCRIPTION
7G	3	12/6"/FLG PROTECTOR (AT POST 2, 4 & 6)
30G	1	12/12/6/S SRT-1 (GUARDRAIL)
39G	1	12/12/6/S SRT-2 (GUARDRAIL)
700A	1	CABLE ANCHOR BRACKET
907G	1	12/BUFFER/ROLLED (TERMINAL)
3000G	1	3/4 x 6'-6" CABLE

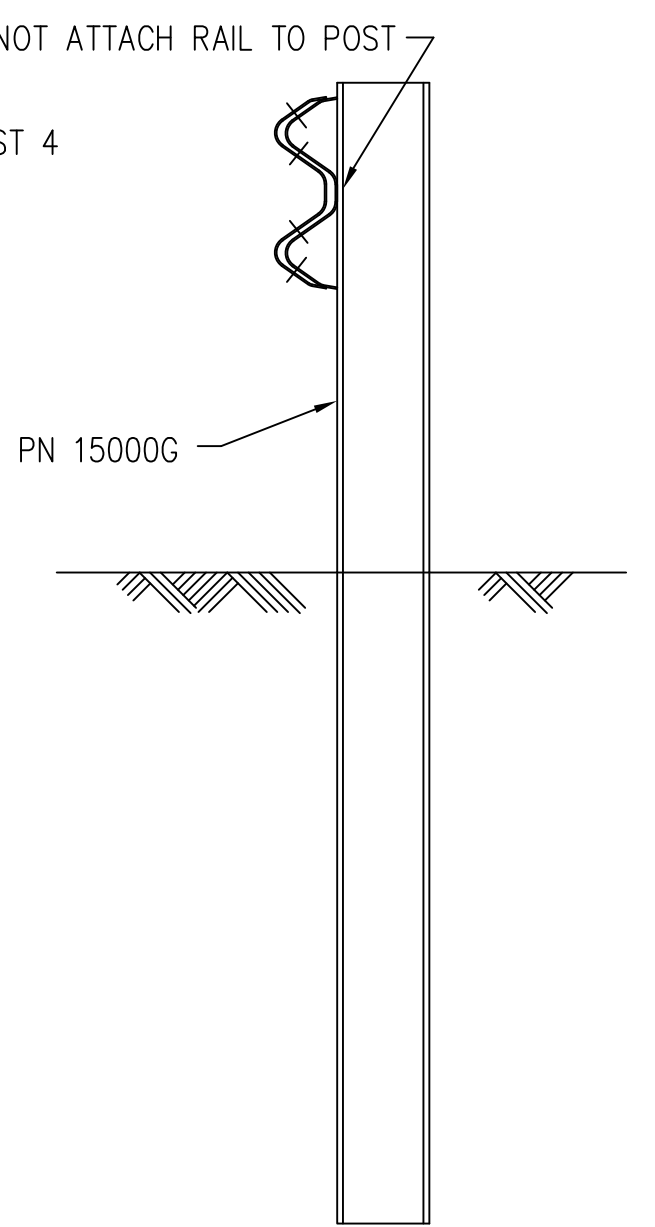
HARDWARE		
3240G	2	5/16" WASHER (AT POST 1)
3245G	2	5/16" HEX NUT (AT POST 1)
3300G	12	5/8" WASHER
3340G	67	5/8" HEX HGR NUT
3360G	52	5/8" x 1 1/4" HGR SPLICE BOLT
3380G	8	5/8" x 1 1/2" HEX HD BOLT
3400G	4	5/8" x 2" HGR POST BOLT (AT POSTS 1, 2 & 4)
3391G	2	5/8" x 1 3/4" HEX BOLT (A325) (AT STRUT)
3900G	2	1" WASHER (AT CABLE)
3910G	2	1" HEX NUT (AT CABLE)
4211G	2	5/16" x 1 3/4" HEX BOLT (AT POST 1)
4419G	1	5/8" x 1 3/4" COUNTERSUNK HD BOLT (AT POST 6)
9960G	4	SLOT GUARD BRACKET
10967G	1	12/9'4.5/3'1.5/S SRT-3 (GUARDRAIL)
15000G	5	6'-0" SYT POST (W6 X 8.5)
33909G	1	CABLE ANCHOR BRACKET (AT POST 1)
33875G	1	ANGLE STRUT 3 x 3 x 1/4
34052A	1	CR POST 1 BOT (W6 x 15)
34053A	1	CR POST 1 TOP (W6 x 8.5)
34054G	1	POST SHELF ANGLE (AT POST 2)



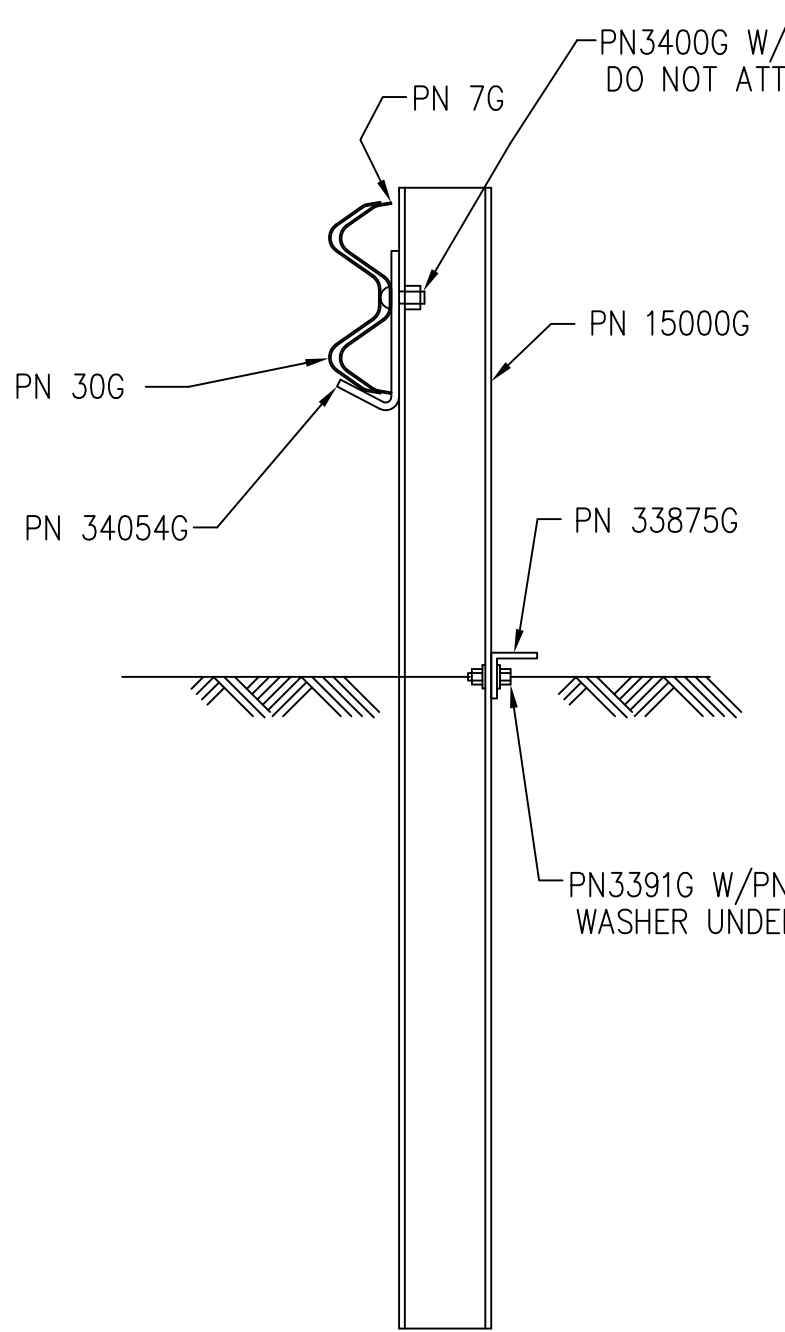
SECTION "D-D"
(@ POST #6)



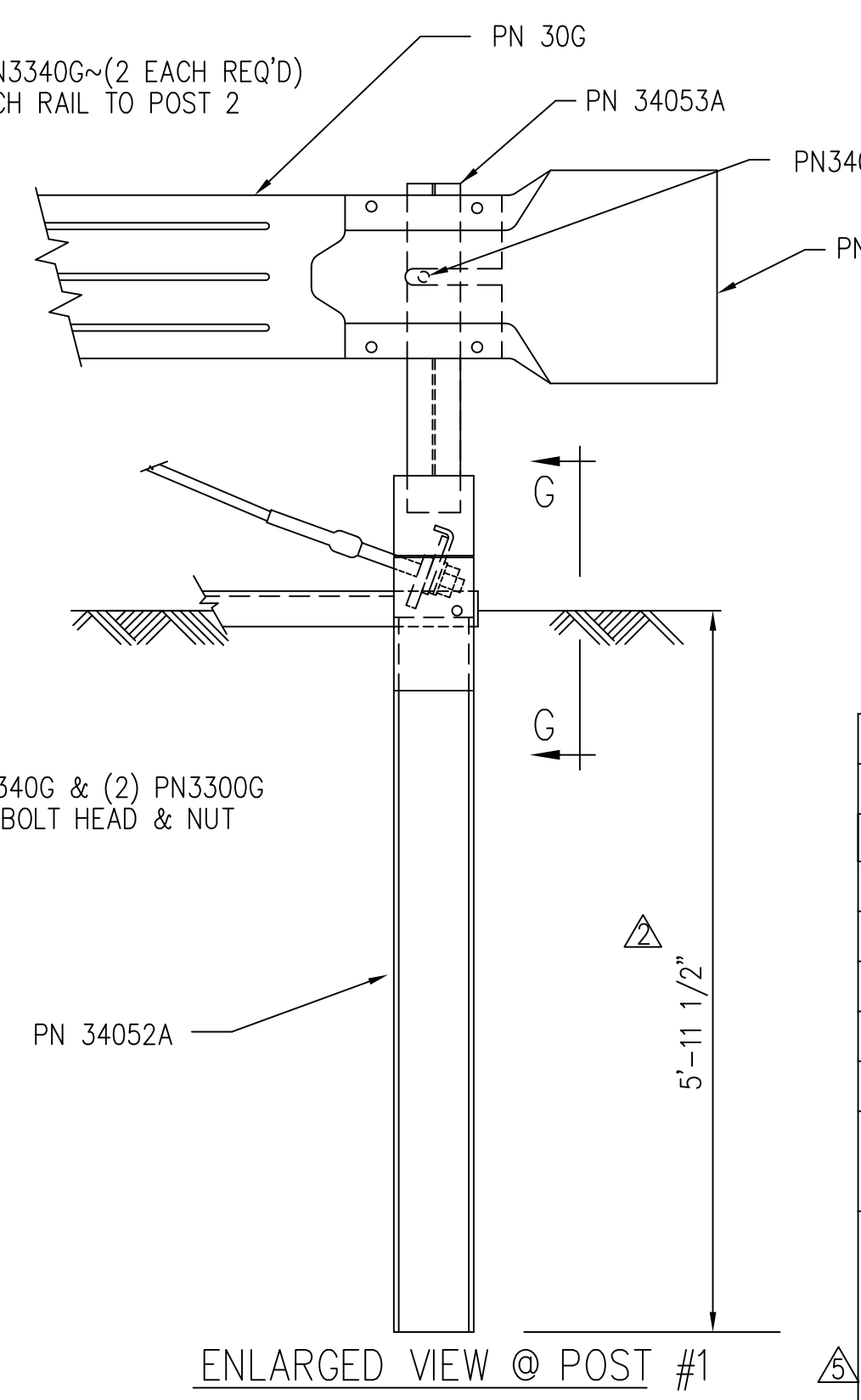
SECTION "C-C"
(@ POST #4)



SECTION "B-B"
(@ POST #3 & #5)



SECTION "A-A"
(@ POST #2)



ENLARGED VIEW @ POST #1

REV.	CHK'D	BY	DATE	REMARKS
G	AJC	JM	2/8/23	ECO 8683 - UPDATE BORDER
6	DPH	KWL	11/14/16	ECO 4462; PN 3000G CALLOUT MOVED TO CORRECT POSITION (TOP VIEW); ADD: "(PAY LIMIT)", EXT LINE TO SPLICE FOR STD H GR
5	BT	SSny	8/5/13	DIM MOVED TO CORRECT POSITION, TITLE CORRECTED
4	BT	LH	10/6/10	OFFSET POSTS #7 & #8
3	BT	LH	2/26/09	REVISED HARDWARE
2	SG	LH	7/28/08	REVISED POST #1 LENGTH IN GROUND

SRT-31

SRT-31 (31" H, 34'-4 1/2")
 SLOTTED RAIL TERMINAL ERECTION DETAILS
 (3 PANELS, CR AND SYT POSTS)

DRAWN	BT
CHECKED	SG
SCALE	NTS
DATE	10/30/07
ENG. FILE #	SS436-01E
SHT.No.	E1 OF 1
DRAWING NO.	SS 436
REV.	G

Valtir, LLC.
 15601 Dallas Parkway, Suite 525
 Addison, Texas 75001

This drawing and the information shown thereon is the sole property of Valtir, LLC. Neither the drawing nor such information is to be used for any purpose other than that for which it was specifically furnished by Valtir, LLC., nor is any reproduction authorized without written permission.